

10 YALIKAVAK

Yalıkavak / Bodrum



For More Projects and Inspirations:
www.alukrom.com



10 YALIKAVAK VILLAS

High-End Aluminium Solutions for
High-End Luxury Living

The 10 Yalıkavak is located at one of the most prestigious destinations of Türkiye :
Yalıkavak / Bodrum

Yalıkavak is a town near Bodrum in Muğla Province, on the Aegean coast of Turkey.

It is 18 kilometres (11 miles) from Bodrum, on the northern side of the Bodrum peninsula. Yalıkavak is surrounded by hills providing views of the town and surrounding Aegean coastline and there are several beaches and bays in the vicinity.



The Yalıkavak area has been inhabited since around the second millennium BCE. Formerly the Bodrum area's main sponge diving port, Yalıkavak is now a tourism hub and location for many holiday residences. The town has a bustling centre with weekly markets (Tuesdays produce, Thursdays textiles and household items) and numerous shops and restaurants.

In 2009 Yalıkavak hosted the RS:X Youth World Championships in windsurfing, with 109 competitors taking part.

The Yalıkavak Marina, a major commercial development within the town, provides 620 berths for yachts up to 135m in length, as well as housing a range of shopping, dining and leisure facilities.

A Spectacular Design At a Unique Location

10 Yalikavak is a new residential complex in the Bodrum Peninsula of Turkiye, in the locality of Yalikavak region.

Twelve carefully placed villas with individual pools accommodate sea view terraces to discover the Aegean Sea and charming Yalikavak Bay by enjoying a 180° panoramic view of the sea and the islands.

On a panoramic view, this new-born gated community consists of independent villas surrounded by the Mediterranean maquis that provide privacy, where every villa blends into lush nature.

The highest quality aluminium facade elements were specified for this spectacular project, where **Alukrom** has provided a **turnkey solution** for its client since inception.



Project Location	: Bodrum Mugla
Project Type	: Multiple House
Project Group	: Residential
Project Start	: 2022
Construction End	: 2024
Total Site Area	: 10.700 m ²
Number of Villas	: 12

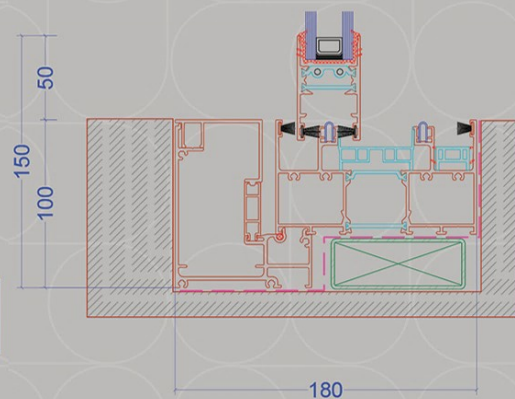
Reynaers SP68 Series

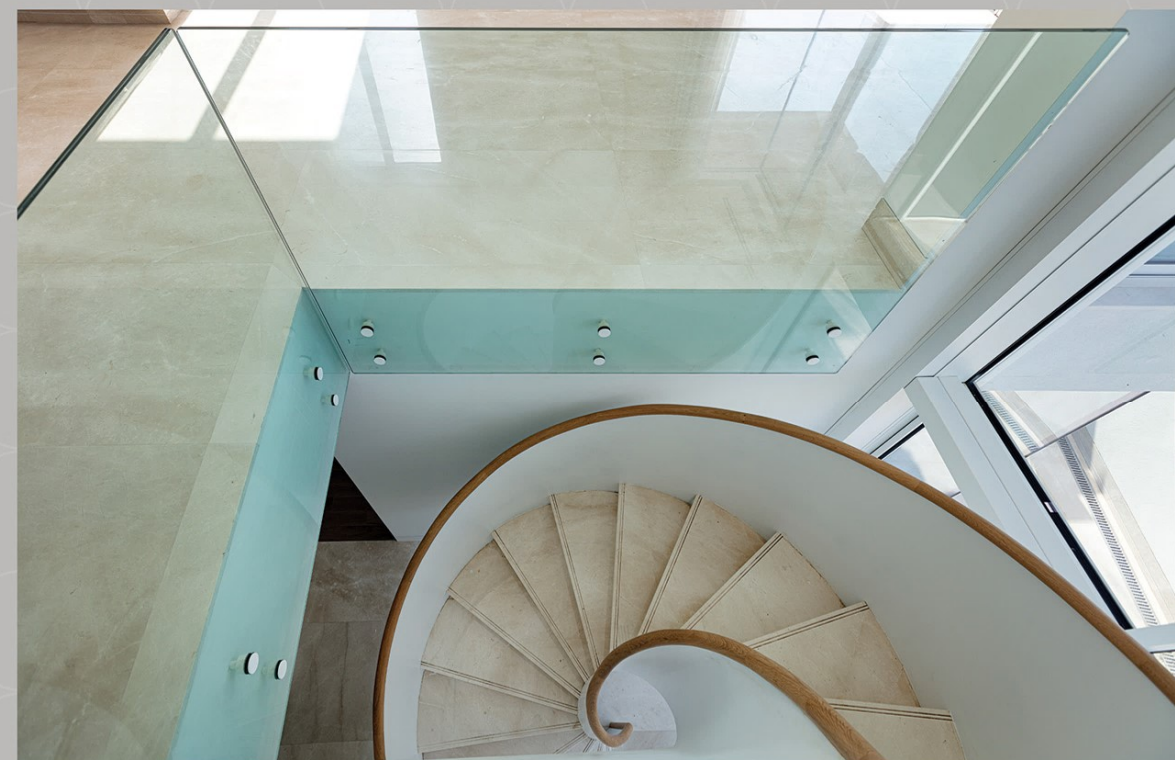
For An Excellent 180° Panoramic View



3 Installations

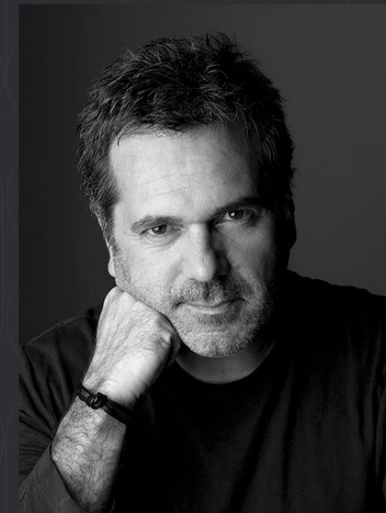
Height : 2800 mm.
Width : 5600 mm.
Glass : Guardian Glass
Aluminium : Reynaers SP68
Masterline 8, Cw50, Slimline38







About the Architect Han TÜMERTEKİN



Having completed his architectural education at Istanbul Technical University, Tümertekin completed his master's degree in historical preservation topic at Istanbul University.

In addition to his professional work, Tümertekin has also contributed to architectural education since 1992. He is a guest lecturer at **Harvard University Graduate School of Design**, **Ecole Polytechnique Fédérale de Lausanne** and **Ecole Spéciale d'Architecture-Paris**, as well as the founder of Istanbul Bilgi University Architecture Master's Program.

He diversifies his architectural production by participating in seminars, juries, working groups and giving conferences.

Tümertekin's works, which are included in architectural publications, were published as a monograph by Harvard University Press in 2007.

Tümertekin, who was deemed worthy of national and international awards, won the **2004 Aga Khan Architecture Award** with his "B2 House".

Tümertekin, who took part in the 2004-2007 Aga Khan Architecture Award jury, was a member of the Aga Khan Architecture Awards Board of Directors in the 2007-2010, 2010-2013 and 2013-2016 terms.

Han Tümertekin carries out his architectural activities within the framework of **Architects and Han Tümertekin Project Consultancy Services** in **Istanbul** and Atelier Han Tümertekin offices in **Strasbourg**.

Tümertekin has realized projects in Turkey, Netherlands, Japan, United Kingdom, France, China, Mongolia and Kenya.



High Quality Production for High-End Villa Solutions

Alukrom is one of the leading companies in Türkiye in the speciality of architectural envelopes, facades and all architectural installations of aluminium-chrome-glass materials.

Established in 1990, the firm is celebrating its 35th anniversary in the aluminium and architectural envelope business.

As well as having a successful track record of various building uses up until today, the company specialises in designing and producing high-end and high-quality façade solutions for prestigious villa schemes.

